

AC/DC Switching Adapter - Single Output

**ITE/Medical AC/DC Power Adapter
AD-A10 Series 300Watts
DOE level VI Efficiency Compliant**

FEATURES

- ITE & Medical Approvals
- 3-prong IEC320-C14 AC inlet, Class I
- Medical applications Protection: Means of patient protection (MOPP)
- < 0.5 W No Load Input Power
- Meet Efficiency DOE Level VI requirements.
- 3 year warranty

ELECTRICAL SPECIFICATIONS

- Input range : 90 - 264VAC
- Frequency : 47 - 63Hz
- Power Factor : > 0.95 @115VAC; > 0.90 @230VAC @full load
- Inrush current : < 80A peak @115VAC; < 130A peak @230VAC cold start @25°C
- Input current (rms) : 3.2A @115VAC; 2.2A @230VAC max.
- Efficiency : > 88% (Average) 25 %, 50 %, 75 % and 100 % of full load @ 115/230VAC
- Earth leakage current < 250uA @264VAC
- Maximum output power (Po) : 300 Watts convection cooling
- Hold-up time : > 10ms typical @full load, 115VAC
- Short circuit protection : Auto-recovery
- Over load protection : 105% to 150% maximum rating, Auto-recovery
- Over voltage protection : Auto-recovery

ENVIRONMENTAL

- Operating temperature : 0 to +60°C (Refer to "Derating Curve")
- Cooling: Convection-cooling
- Storage temperature: -20°C to +85°C
- Humidity: Non-condensing 0% to 90%
- MTBF : > 100K hours @full load and 25°C ambient temperature based on Bellcore TR-332



RoHS compliant

Dimension : L 220xW 112xH44 mm (8.66"x4.4"x1.73"
Weight : 1.57 kgs. (3.46 lbs.)

SAFETY STANDARDS

UL/c-UL UL60601-1
TUV EN60601-1
CB IEC 60601-1
UL/c-UL UL60950-1
TUV EN60950-1
CB IEC 60950-1

EMC STANDARDS

EN60601-1-2
FCC Part 18 Class B
EN 55011 Class B
EN55022 Class B
EN55024 Class B
FCC Part 15 Class B
CE

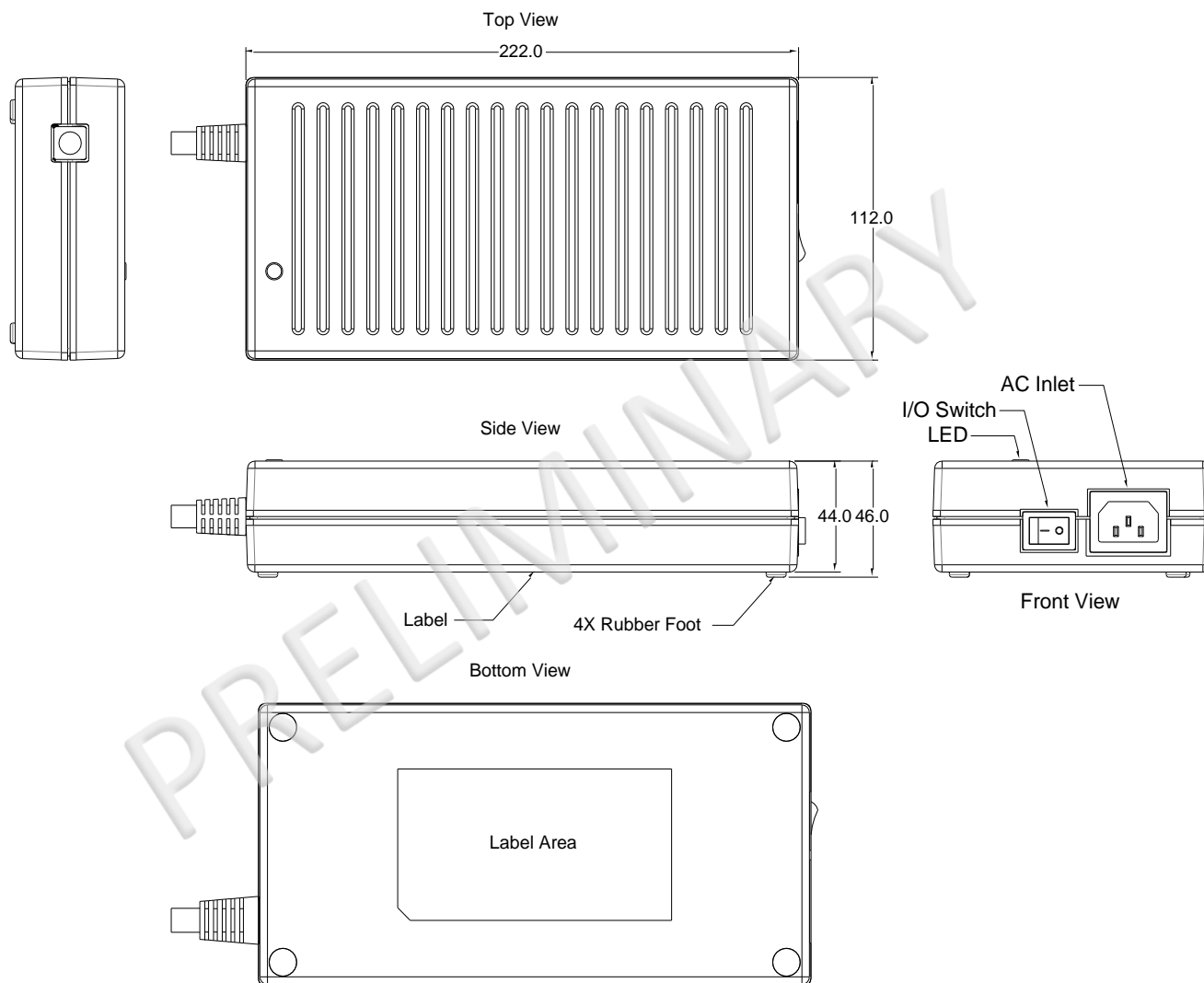
DC OUTPUT & FEATURES

Model No.	Output Rating		Po	Output Regulation	Ripple & Noise (Vp-p)	Efficiency Level
	V	A				
PW-IM300A-1Y120M1	+12V	25A	300W	±5%	240mV	VI
PW-IM300A-1Y190M1	+19V	15.79A	300W	±5%	300mV	VI
PW-IM300A-1Y240M1	+24V	12.5A	300W	±5%	300mV	VI
PW-IM300A-1Y280M1	+28V	10.71A	300W	±5%	300mV	VI
PW-IM300A-1Y480M1	+48V	6.25A	300W	±5%	300mV	VI
PW-IM300A-1Y540M1	+54V	5.56A	300W	±5%	300mV	VI

Note:

1. Ripple and noise are measured at oscilloscope 20MHz bandwidth by a 47uF electrolytic capacitor and a 0.1uF ceramic capacitor in parallel at output connector.

MECHANICAL SPECIFICATION



MATCHING CONNECTORS

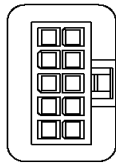
DC Output Connector

Standard male plug(power supply side): 10 PIN Min Fit Pitch:4.2mm

Mating : Molex P/N: 39-28-1123 or equivalent.

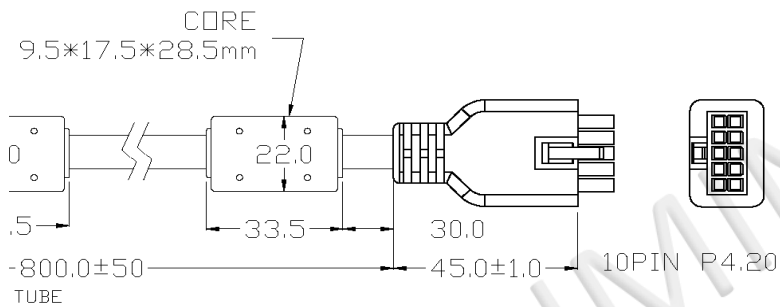
DC output cable: 8C+1, UL2464, 16AWG, VW-1, 80°C, 300V

- 1.BROWN (GND)
- 2.BLACK (GND)
- 3.BLUE (GND)
- 4.GREEN (GND)
- 5.D.W (GND/EARTH)



- 6.RED (+V)
- 7.WHITE (+V)
- 8.YELLOW (+V)
- 9.ORANGE (+V)
- 10. N.C

FRONT VIEW
10P DIN



Derating Curve

